



IFLA's

Three Pillars & WSIS



International Federation of Library Associations and Institutions

Growing up in Southern Africa





International Federation of Library Associations and Institutions

Children's Library, Santiago, Chile





International Federation of Library Associations and Institutions

State Library of Tasmania



University of Tasmania Library
Australia





IFLA's Three Pillars

*S
o
c
i
e
t
y*

- Libraries and information services serve society by preserving memory, feeding development, enabling education & research, and supporting international understanding & community well being.



International Federation of Library Associations and Institutions

Public Library, El Calafate, Argentina





IFLA's Three Pillars

*s
o
c
i
e
t
y*

- IFLA works on the matters which affect library and information services globally, including:
 - intellectual property, privacy and other legal issues
 - censorship, other barriers to access to information & freedom of expression & ethical concerns
 - protection of heritage and library services in times of conflict
 - the major international issues relating to the information society



IFLA's Three Pillars

s
o
c
i
e
t
y

IFLA's special programs
directed towards societal
matters:

- *FAIFE* - Committee on Free Access to Information and Freedom of Expression
- *CLM* - Committee on Copyright and other Legal Matters



International Federation of Library Associations and Institutions

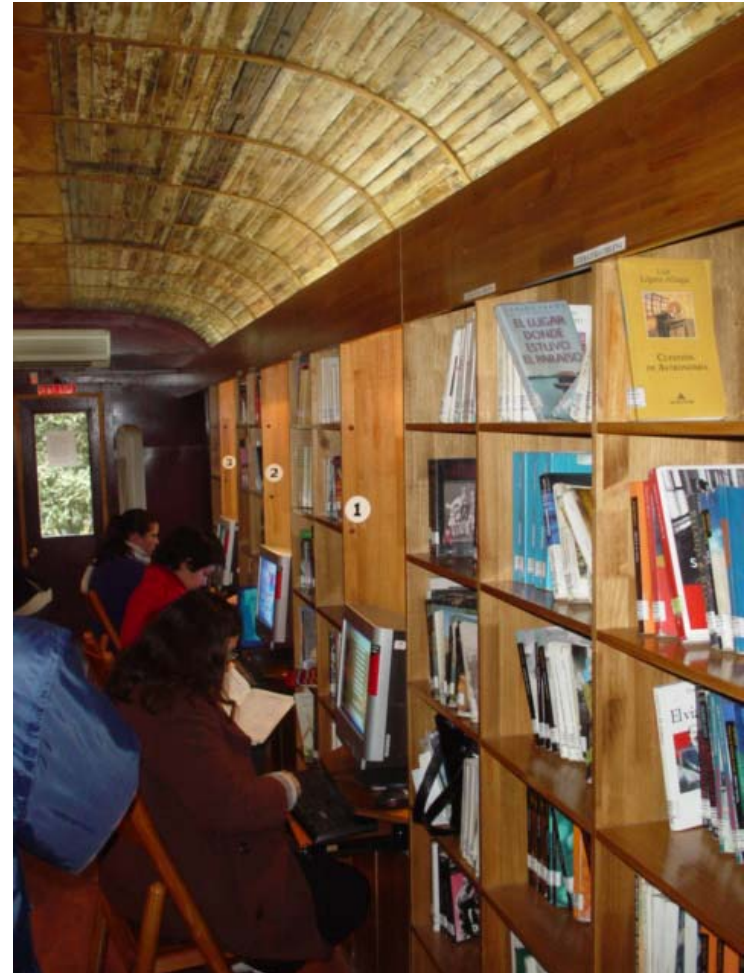
University Library, University of the North,
Limpopo Province, South Africa





International Federation of Library Associations and Institutions

Train Library, National Library, Santiago, Chile





IFLA's Three Pillars

IFLA works with partners to address shared priorities:

S
o
c
i
e
t
y

- *WSIS* - engagement with the World Summit on the Information Society & other international arenas
- *Blue Shield* - partnership with International Council of Museums, International Council on Monuments & Sites and International Council on Archives
- Other important partners include Unesco, the International Publishers' Association and the telecentres movement



International Federation of Library Associations and Institutions

University Library, University of Botswana





International Federation of Library Associations and Institutions

Suzhou Library, China





IFLA's Three Pillars

*p
r
o
f
e
s
s
i
o
n*

- As the global voice for libraries & information services and the profession, IFLA has always been vitally concerned with improving methods, technical means and standards



International Federation of Library Associations and Institutions

Shanghai Library, China





IFLA's Three Pillars

*p
r
o
f
e
s
s
i
o
n*

- Professional activities are coordinated by the Professional Committee. They include:
 - 48 sections grouped into 8 divisions
 - special focal programs dealing with improvement of library services for development, formulation & elaboration of standards, preservation & conservation



International Federation of Library Associations and Institutions

Zhejiang Provincial Library, Hanzhou, China





IFLA's Three Pillars

*p
r
o
f
e
s
s
i
o
n*

- IFLA' special programs directed towards professional concerns:
 - **ALP** - Action for Development through Libraries program
 - **ICABS** - IFLA-CDNL Alliance for Bibliographic Standards
 - **PAC** - Preservation and Conservation
 - **UNIMARC**



International Federation of Library Associations and Institutions

Jiaye Library, China





IFLA's Three Pillars

*m
e
m
b
e
r
s*

- IFLA's central pillar is its membership which it supports through a range of services, including:
 - the annual World Library & Information Congress
 - specialist and regional conferences
 - IFLA Journal, books and other publications



International Federation of Library Associations and Institutions

Library, Estrellas, Chile, Antartica





IFLA's Three Pillars

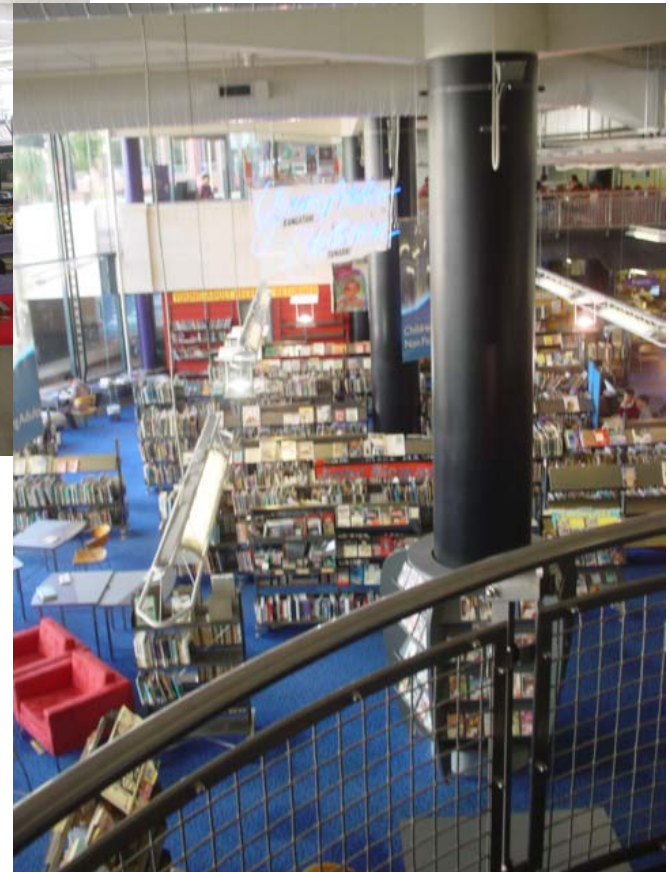
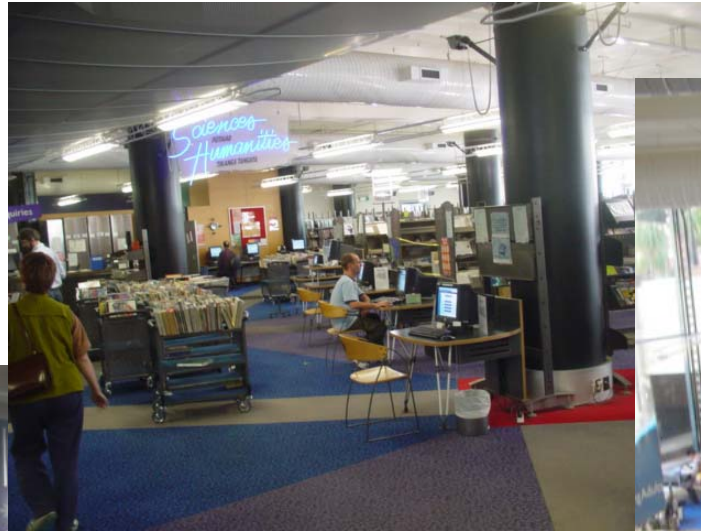
m
e
m
b
e
r
s

- IFLA's membership offers global reach:
 - 1700 members from 150 countries including national, international & specialist library associations, libraries and information services, corporate partners and individuals
 - IFLA's members contribute time & resources to achieve IFLA's goals to improve libraries & information practice & to serve global society



International Federation of Library Associations and Institutions

Wellington Public Library New Zealand





IFLA's Three Pillars

*s
o
c
i
e
t
y*

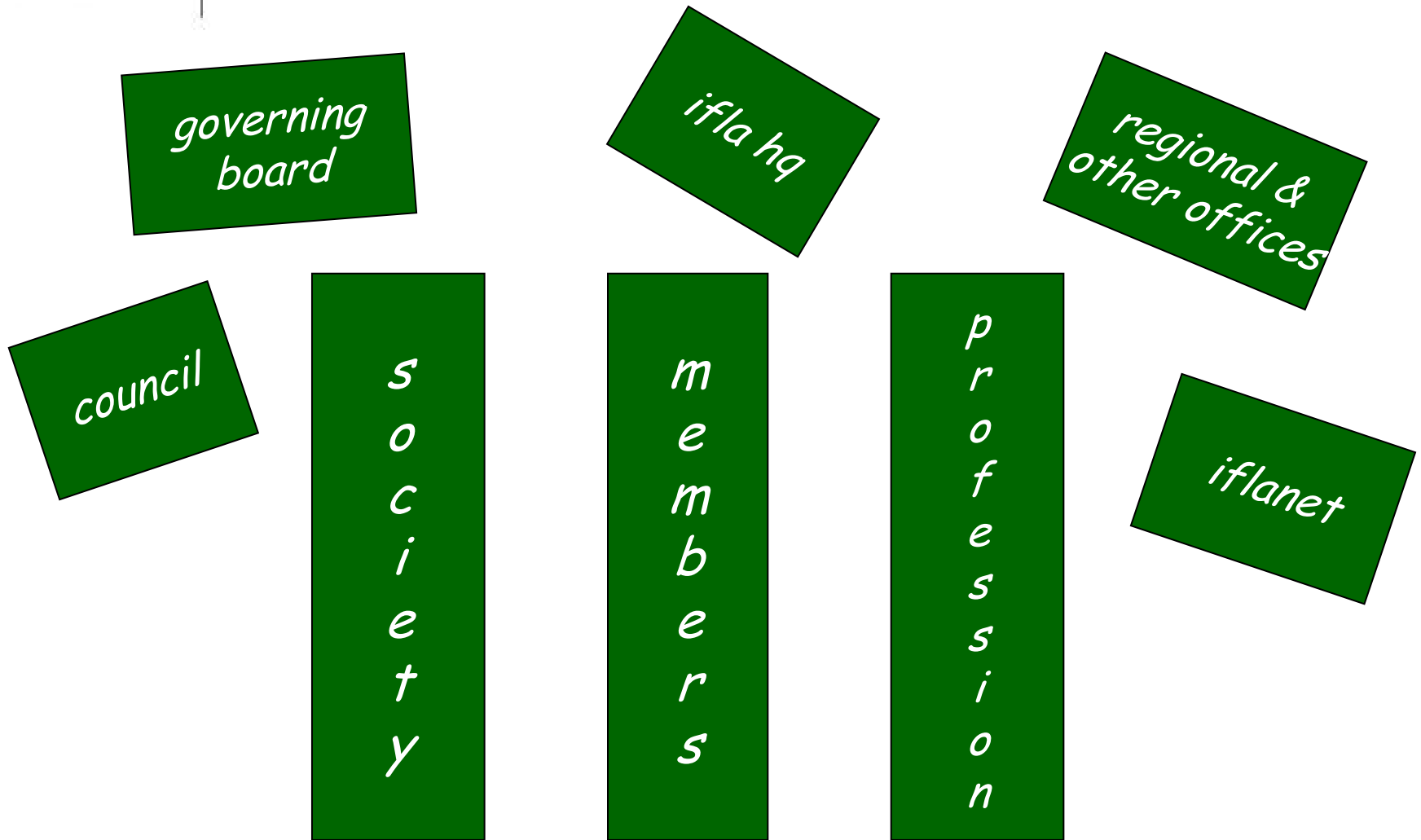
*m
e
m
b
e
r
s*

*p
r
o
f
e
s
s
i
o
n*

Globally interdependent, active and engaged



International Federation of Library Associations and Institutions



Governance, staff and IFLANET are the key enablers



International Federation of Library Associations

Institutions

I	F	L	A	
<i>s</i>		<i>m</i>		<i>p</i>
<i>o</i>		<i>e</i>		<i>r</i>
<i>c</i>		<i>m</i>		<i>o</i>
<i>i</i>		<i>b</i>		<i>f</i>
<i>e</i>		<i>e</i>		<i>e</i>
<i>t</i>		<i>r</i>		<i>s</i>
<i>y</i>		<i>s</i>		<i>s</i>
				<i>i</i>
				<i>o</i>
				<i>n</i>



International Federation of Library Associations and Institutions

IFLA Council, World Library & Information Congress 2004,
Buenos Aires





World Summit on the Information Society

- IFLA's engagement with WSIS helped emphasise the needs of society
- The Declaration of Principles and Plan of Action recognised the importance of libraries and information services and the key issues of concern to the sector



International Federation of Library Associations and Institutions

Libraries@the Heart, IFLA Pre-Conference
for the World Summit on the Information Society





WSIS

The 11 key principles “for building an inclusive Information Society” in the WSIS Declaration of Principles, Geneva, 2003 include:

2. Information and communication infrastructure: an essential foundation for an inclusive information society
3. Access to information and knowledge



International Federation of Library Associations and Institutions

Bibliored Internet Access, Santiago, Chile





WSIS

8. Cultural diversity and identity, linguistic diversity and local content
9. Media
10. Ethical dimensions of the Information Society
11. International and regional cooperation



International Federation of Library Associations and Institutions

Biblio Metro, Santiago, Chile





IFLA

*Working for libraries
and information
services globally*



International Federation of Library Associations

Institutions

I	F	L	A	
<i>s</i>		<i>m</i>		<i>p</i>
<i>o</i>		<i>e</i>		<i>r</i>
<i>c</i>		<i>m</i>		<i>o</i>
<i>i</i>		<i>b</i>		<i>f</i>
<i>e</i>		<i>e</i>		<i>e</i>
<i>t</i>		<i>r</i>		<i>s</i>
<i>y</i>		<i>s</i>		<i>s</i>
				<i>i</i>
				<i>o</i>
				<i>n</i>