

Non-MARC-ish BIBFRAME

Andreas Andersson
National Library of Sweden

IFLA Bibliography Section Webinar

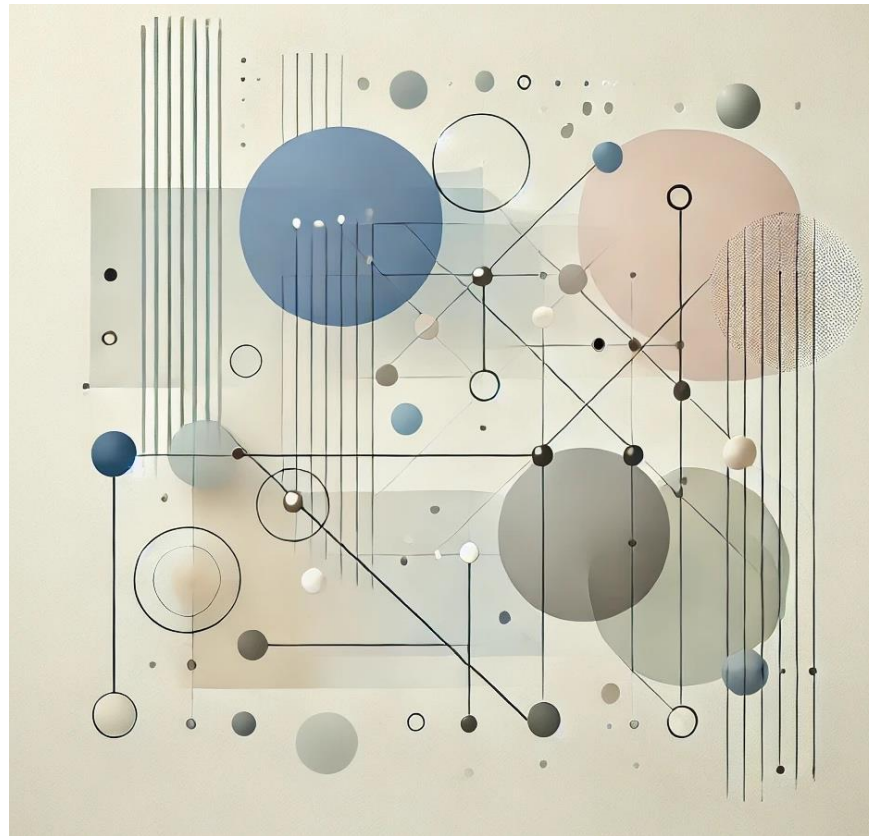
Linked Open Bibliographies: Exposing, Linking, Reusing

27/11/2024



BIBFRAME as the successor of MARC

- From records to graphs
- From codes to URIs
- From silos to relations



KBV (KB Base Vocabulary)

- Application vocabulary based upon BIBFRAME
- Flavour/extension of BIBFRAME
- In production for 6 years
- Free from constraints of MARC (in theory)
- Swedish Union Catalogue: 17 million records
- Swedish National Bibliography: 800 000 records
 - 80 000 records originally catalogued in KBV

The screenshot displays the KBV interface with a search results page. On the left, there are filter sections for 'LIBRIS', 'OTHER SOURCES', 'HAS HOLDING', 'TYPE OF WORK', 'ISSUANCE TYPE', and 'ENCODING LEVEL'. The main area shows search results for 'Showing 1-20 of 17488379 hits'. The first result is 'The researchED guide to primary literacy • an evidence-informed guide for teachers' with identifier ISBN 9781036006426 and 144 pages. The second result is '[Cirkus - samling av trycksaker]' with identifier ISBN 9781036006425 and 144 pages. The third result is 'The descent of man' with identifier ISBN 9780141981741 and 145 pages. Each result includes a 'HOLDING' button with a plus sign and a count of 1.

MARC data?

*“MARC has been adapted to carry RDA data, and BIBFRAME is being developed with RDA data as a prominent content type. Both MARC and BIBFRAME accommodate data recorded by other rules but the cataloging rules give them similarity. **The repackaging is not of MARC data but of cataloging content data.**”*

<https://www.loc.gov/bibframe/faqs/#q13>

- MARC controlling cataloguing practice
- Cataloguing to create MARC records
- Content data that can't be explained outside of a MARC context

MARC in KBV

SERIES MEMBERSHIP

▼ Series membership:

• INSERIES

► Instance: ISSN 0347-4925

• SERIES STATEMENT

Acta Regiae Societatis scientiarum et litterarum Gothoburgensis.
Interdisciplinaria

• SERIES ENUMERATION

22

• SERIES TRACING POLICY

1

```
:seriesMembership [ a :SeriesMembership ;  
  :inSeries [ a :Instance ;  
    :instanceOf [ a :Work ;  
      :hasTitle [ a :Title ;  
        :mainTitle "Acta Regiae Societatis scientiarum et litterarum Gothoburgensis. Interdisciplinaria" ] ] ;  
      :identifiedBy [ a :ISSN ;  
        :value "0347-4925" ] ] ;  
      :seriesStatement "Acta Regiae Societatis scientiarum et litterarum Gothoburgensis. Interdisciplinaria" ;  
      :seriesEnumeration "22" ;  
      marc:seriesTracingPolicy "1" ] ] ;
```

490 - Series Statement

First Indicator - Series tracing policy

Whether the series has no corresponding added entry (not traced) or has a corresponding 800-830 series added entry field.

0 - Series not traced

No series added entry is desired for the series.

1 - Series traced

When value 1 is used, the appropriate field 800-830 is included in the bibliographic record to provide the series added entry.

(<https://www.loc.gov/marc/bibliographic/bd490.html>)

PUBLICATION

▼ Primary publication:

● COUNTRY

Sweden

● PLACE

➤ Place: Göteborg

● ASSOCIATED AGENT

➤ Agent: Kungl. Vetenskaps- och Vitterhets- Samhället

● YEAR

2024

● DATE

[2024]


```
:publication [ :date "[2024]";  
  :year "2024";  
  a :PrimaryPublication ;  
  :agent [ a :Agent ;  
    :label "Kungl. Vetenskaps- och Vitterhets- Samhället" ] ;  
  :place [ a :Place ;  
    :label "Göteborg" ] ;  
  :country <https://id.kb.se/country/sw> ] ;
```

→ **264\$c**

→ **008/07-10**

- 500 MARC specific properties
- 1500 unhandled subfields/indicators

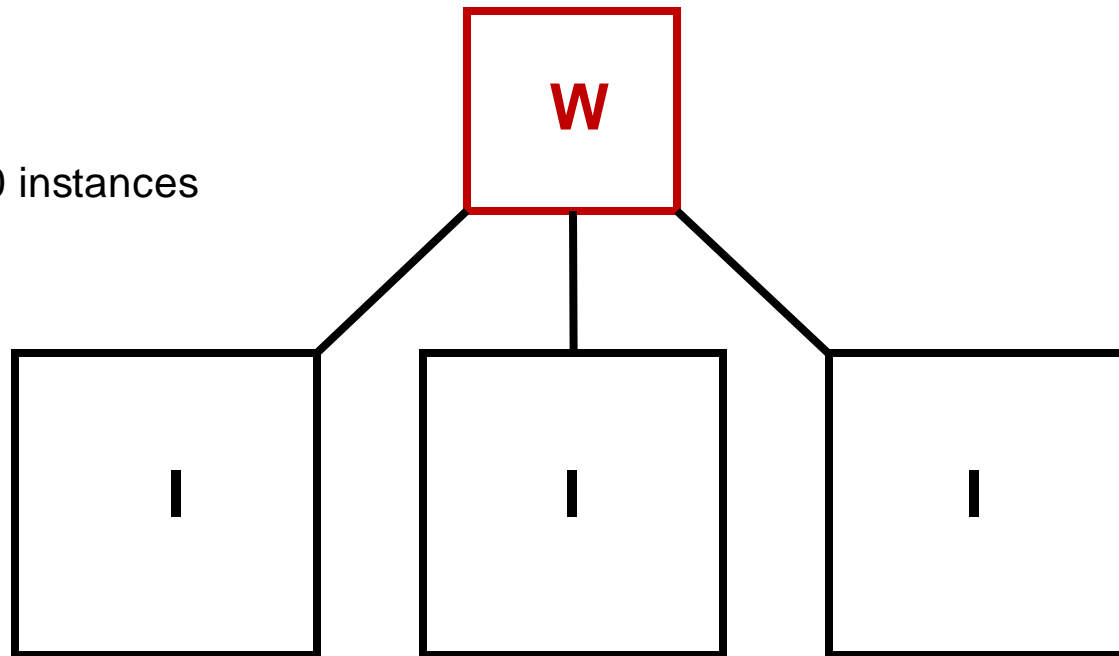
1413: [["700","_unhandled"],["6"]]
 1352: [["856","_unhandled"],["q","n"]]
 1328: [["541","_unhandled"],"ind1"]
 1258: [["583","_unhandled"],["f"]]
 1243: [["600","_unhandled"],"e"]
 1186: [["856","_unhandled"],"w"]
 1091: [["041","_unhandled"],"c"]
 1031: [["650","_unhandled"]," "]
 1026: [["787","_unhandled"],"5"]
 1005: [["100","_unhandled"],["1"]]
 975: [["029"],null]
 928: [["856","_unhandled"],["m"]]
 886: [["883"],null]
 882: [["583","_unhandled"],"ind1"]
 873: [["856","_unhandled"],["q"]]
 872: [["610","_unhandled"],"4"]
 859: [["650","_unhandled"],"c"]
 853: [["710","_unhandled"],"k"]
 804: [["650","_unhandled"],["g"]]

758: [["100","_unhandled"],["2"]]
 734: [["340","_unhandled"],["2"]]
 689: [["586","_unhandled"],"ind1"]
 656: [["700","_unhandled"],"h"]
 609: [["084","_unhandled"],"9"]
 607: [["050","_unhandled"],"ind2"]
 601: [["599","_unhandled"],["5"]]
 568: [["730","_unhandled"],"g"]
 543: [["856","_unhandled"],["n"]]
 517: [["300","_unhandled"],"n"]
 506: [["024","_unhandled"],"ind1"]
 491: [["041","_unhandled"],"2"]
 488: [["916"],null]
 487: [["710","_unhandled"]," "]
 487: [["084","_unhandled"]," "]
 481: [["800","_unhandled"],"w"]
 477: [["650","_unhandled"],"4"]
 457: [["019"],null]
 422: [["574"],null]
 420: [["599","_unhandled"]," "]

373: [["998"],null]
 371: [["856","_unhandled"],["5"]]
 359: [["240","_unhandled"],"g"]
 352: [["630","_unhandled"],["t"]]
 343: [["380"],null]
 337: [["730","_unhandled"],["g"]]
 328: [["085"],null]
 310: [["773","_unhandled"]," "]
 310: [["260","_unhandled"],"d"]
 309: [["700","_unhandled"]," "]
 308: [["575"],null]
 307: [["600","_unhandled"],["a","d"]]
 303: [["856","_unhandled"],["q","v","m"]]
 291: [["245","_unhandled"],["k"]]
 265: [["655","_unhandled"],["5"]]
 265: [["082","_unhandled"],["q"]]
 262: [["700","_unhandled"],["2"]]
 247: [["610","_unhandled"],"k"]
 246: [["650","_unhandled"],"g"]
 245: [["046","_unhandled"],["k"]]

Non-MARC in KBV: entities

- More identified entities
 - Links
- More bibliographic entities
 - bf:Work
 - 57 000 works linked to 150 000 instances



WORK ADMIN METADATA

WORK TYPE	Text
TITLE RESOURCE	➤ Title entity: Pippi Långstrump
CONTRIBUTOR AND ROLE	➤ Primary contribution: Lindgren • Astrid • 1907-2002 • Author
LANGUAGE INFORMATION	Swedish
GENRE/FORM	Fiction • marc Barn- och ungdomslitteratur • barngf Kapitelböcker • barngf
CLASSIFICATION	➤ Classification entity: Hcf • kssb • 8 ➤ DDC Classification: 839.7374 • other • 23/swe ➤ Classification entity: H,u • kssb • 6
SUBJECT	Självständig • barn Busig • barn Frånvarande föräldrar • barn Långstrump, Pippi, (fiktiv gestalt) Flickor • barn
INTENDED AUDIENCE	Juvenile • marc
CONTENT TYPE	text

28 links

PRINTED, INSTANCE • MONOGRAPH, UNMEDIATED, VOLUME

[Pippi Långstrump](#)

Identifier ISBN 9789129723632 • inbunden
Creative respo... Astrid Lindgren ; illustrationer av Ingrid Vang Nyman
Contributor an... Vang Nyman • Ingrid • 1916-1959 • Illustratör, Primärt upphovsansvarig
Edition statem... Trettioförsta upplagan
Publication Sweden • Stockholm • Rabén & Sjögren • 2020 • [2020]
Manufacture 2020
Extent 135 sidor
Dimensions 21.4 cm
Physical detail... illustrationer

HOLDING [Add holdir](#)

ELECTRONIC, INSTANCE • MONOGRAPH, COMPUTER, ONLINERESURS, ONLINEUTGÅVA

[Pippi Långstrump](#)

Identifier ISBN 9789189035003
Creative respo... Astrid Lindgren ; illustrationer av Ingrid Vang Nyman
Contributor an... Vang Nyman • Ingrid • 1916-1959 • Illustratör, Primärt upphovsansvarig
Publication Sweden • Lidingö • 2019; Astrid Lindgren AB
Digital charact... epub
Classification Hcf/DR • kssb • 8

HOLDING [Add holdir](#)

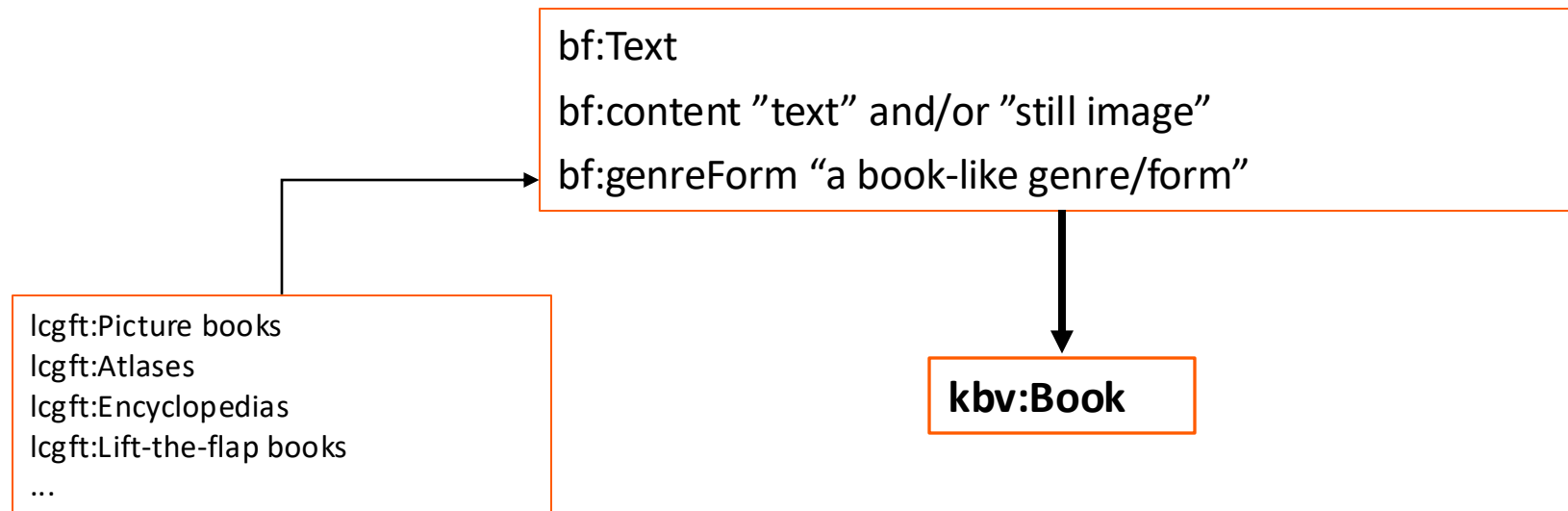
UNSPECIFIED, INSTANCE • MONOGRAPH

[Pippi Långstrump](#)

Identifier ISBN 9789129703771 • halvklotband
Creative respo... Astrid Lindgren ; illustrationer av Ingrid Vang Nyman
Contributor an... Vang Nyman • Ingrid • 1916-1959 • Illustratör, Primärt upphovsansvarig
Edition statem... 30. uppl. [sic]
Publication Sweden • Stockholm • Rabén & Sjögren • 2016
Manufacture Lettland
Extent 135 s.

Non-MARC in KBV: relations

- Relations between entities
 - isAdaptedAsMotionPictureWork, hasSequelWork
- Normalise properties
 - Types: what something “is” (rdf:type, bf:content, bf:genreForm)
- Relations between concepts



Closing notes

- Strategies to steer away from MARC
 - Identify “MARC data”
 - No more “perfect” MARC
 - Preserve legacy data
 - Accept information loss
- Focus on BIBFRAME exclusive functions/structures
 - Entities
 - Relations