



# Considerations in New RDA Toolkit based on LRM

Mihwa Lee (Professor, Kongju National University, South Korea)

This study is to suggest considerations for RDA 2020 (New RDA) through interviewing librarians and mapping LRM to RDA 2020.

## RDA 2020

RDA 2020 (after 3R project) replacing original RDA is a brand new worldwide cataloging rule although ISBD has been an international cataloging rule. RDA 2020 was built to reflect LRM conceptual model and to organize the library bibliographic information in linked data environment. Therefore, RDA 2020 toolkit (a kind of platform) is quite different to original RDA, although with continuity of original RDA.

The features of RDA 2020 are as follows:

1. It has its own entities, and attributes, and relation elements which are different from original RDA to reflect LRM
2. It uses domain and range to be able to construct bibliographic data into linked data
3. It hides the traditional cataloging rules' provisions under elements of each entities
4. It has 4 types of description methods such as unstructured, structured, identifier and IRI

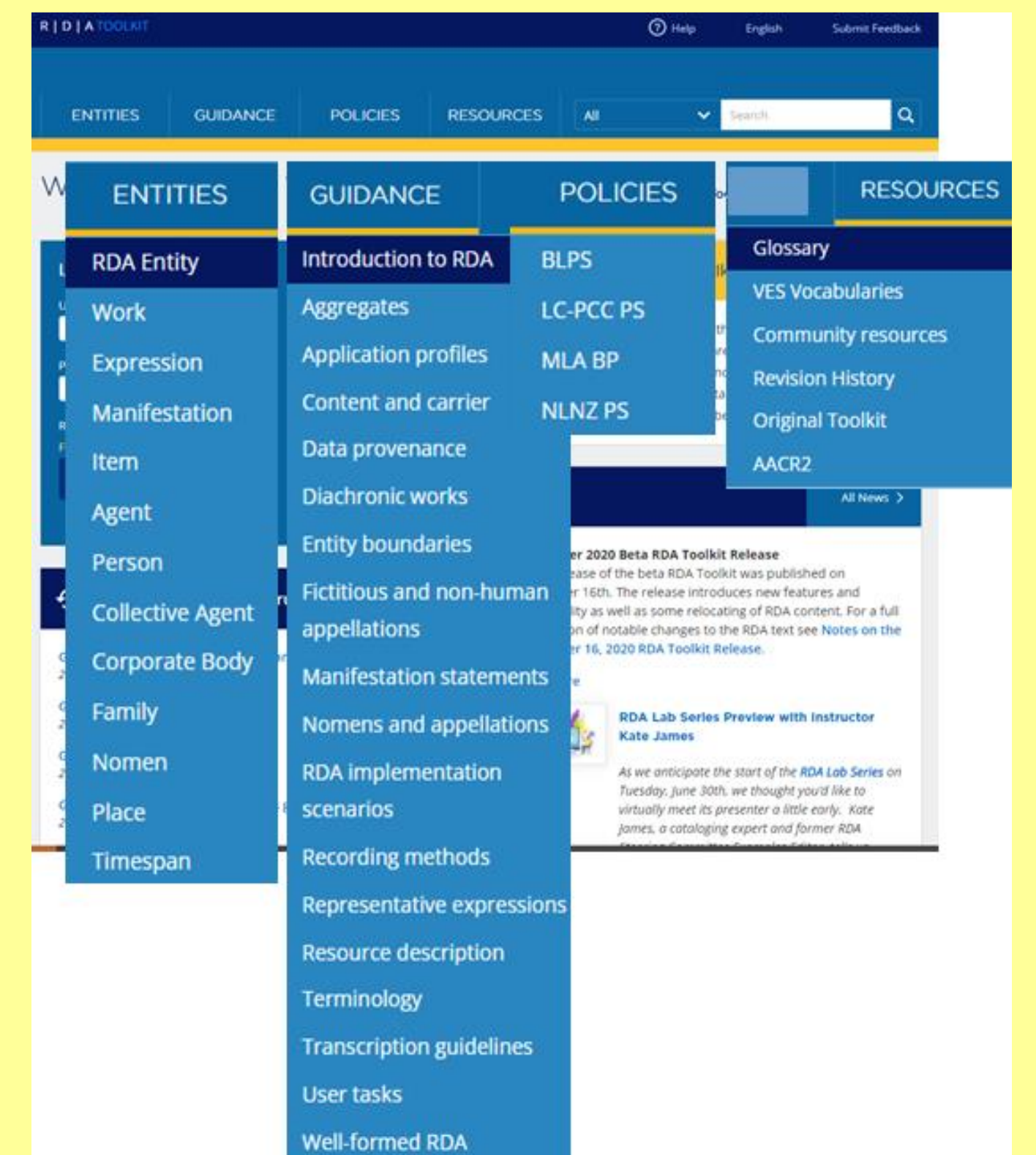


FIG. 1. RDA 2020 main tab

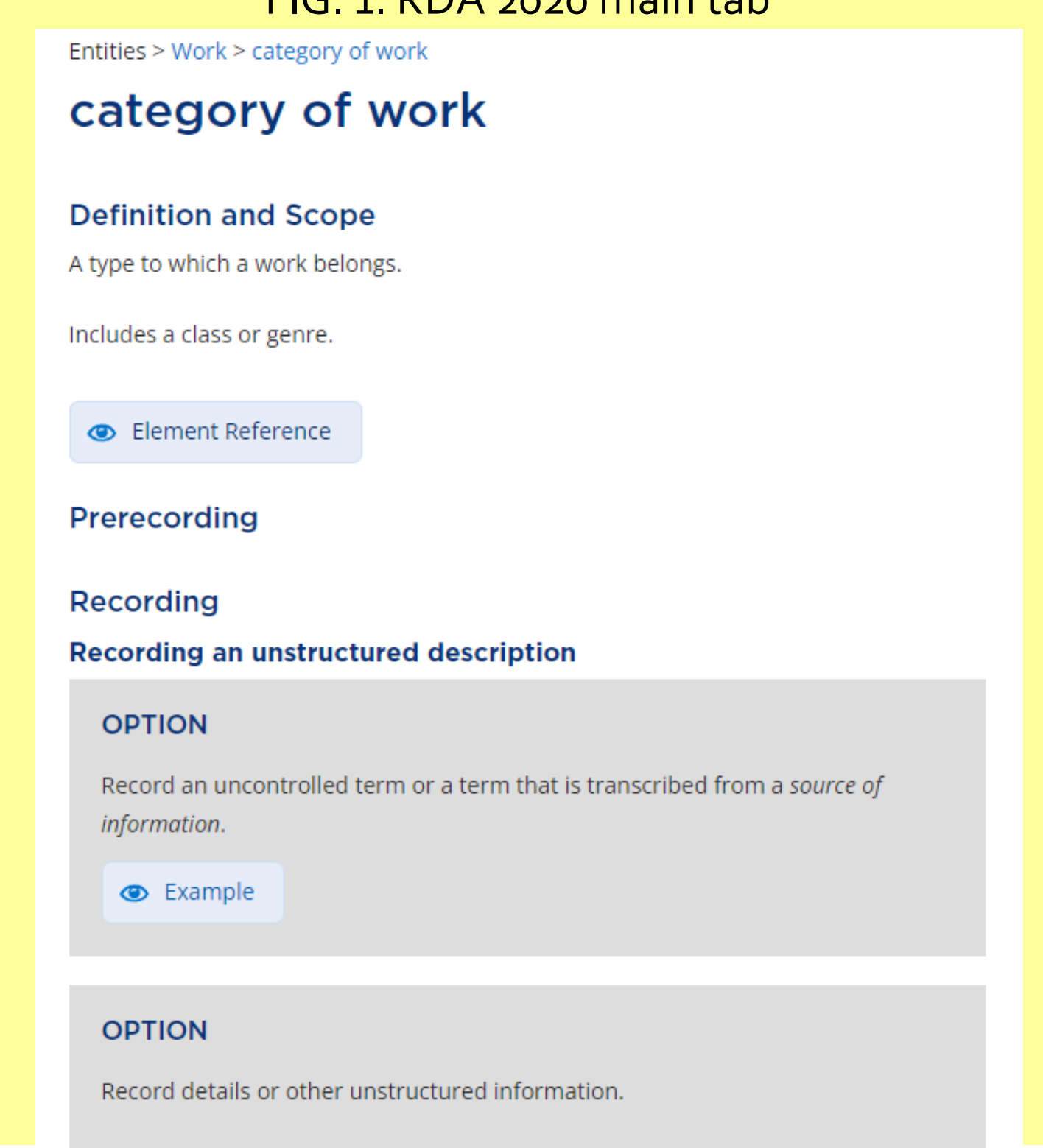


FIG. 2. details of element

## Problems

Through interviewing with several librarians in Korea, some difficulties for librarians using RDA 2020 are as follows:

1. It is not familiar for librarians to use new RDA's toolkit because the plat form of RDA 2020 is different with original RDA.
2. It is not easy to find the appropriate provisions and to apply them because the rules are hidden under elements of each entities and must be tracked by linking to provisions.
3. It is hard to assign content types for complex resource.

“performed music in Youtube video-recording” content types  
→ “performed music” or “2-dimensional moving image”  
or “performed music + 2-dimensional moving image”

“performed music in Youtube still image” content types

→ “performed music” or “performed music + still image”

“performed choreography in Youtube video-recording” content types

→ “notated choreography” or “2-dimensional moving image”  
or “notated choreography + 2-dimensional moving image”

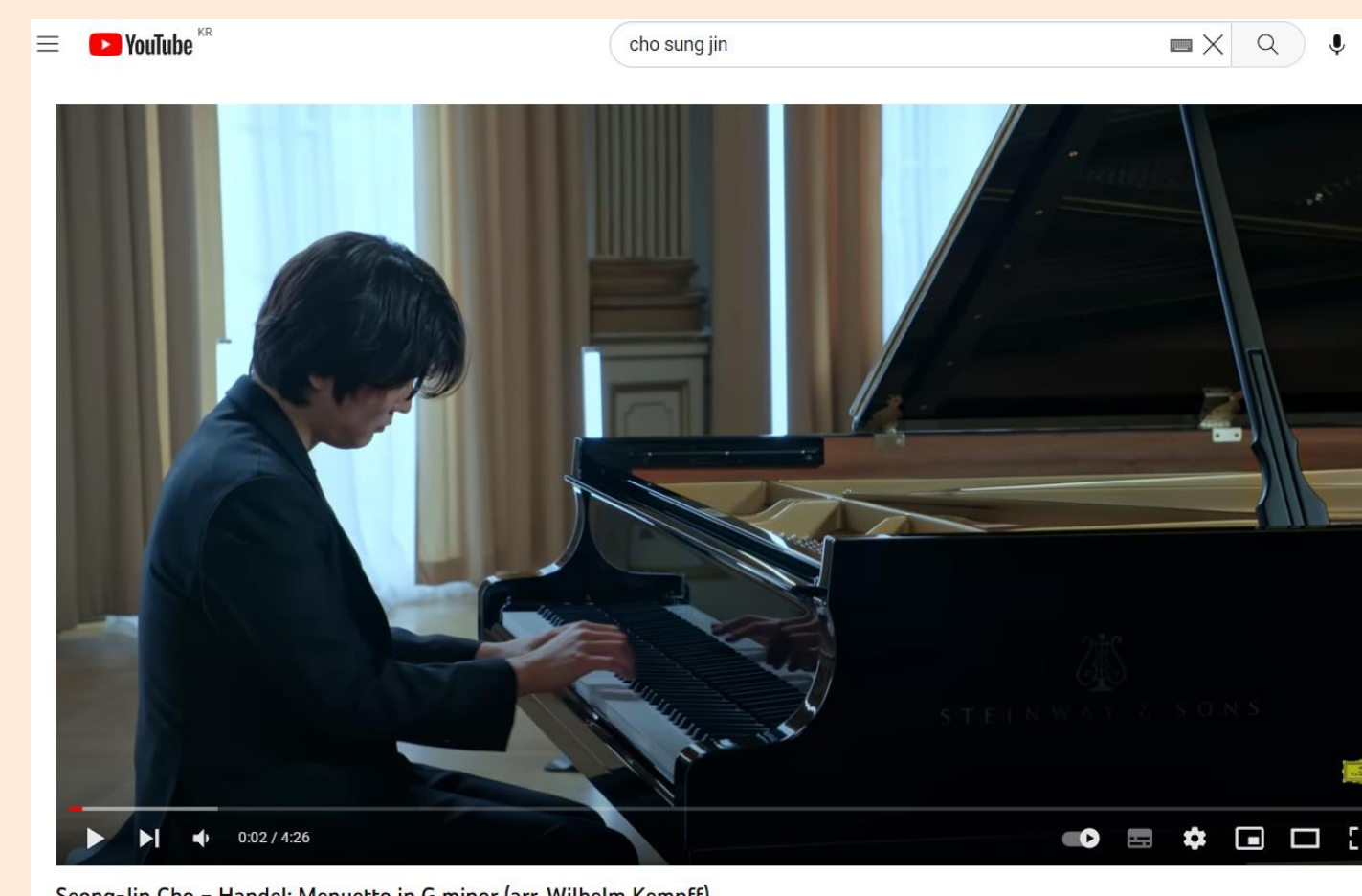


FIG. 3. performed music in YOUTUBE



FIG. 4. performed music in YOUTUBE with still image

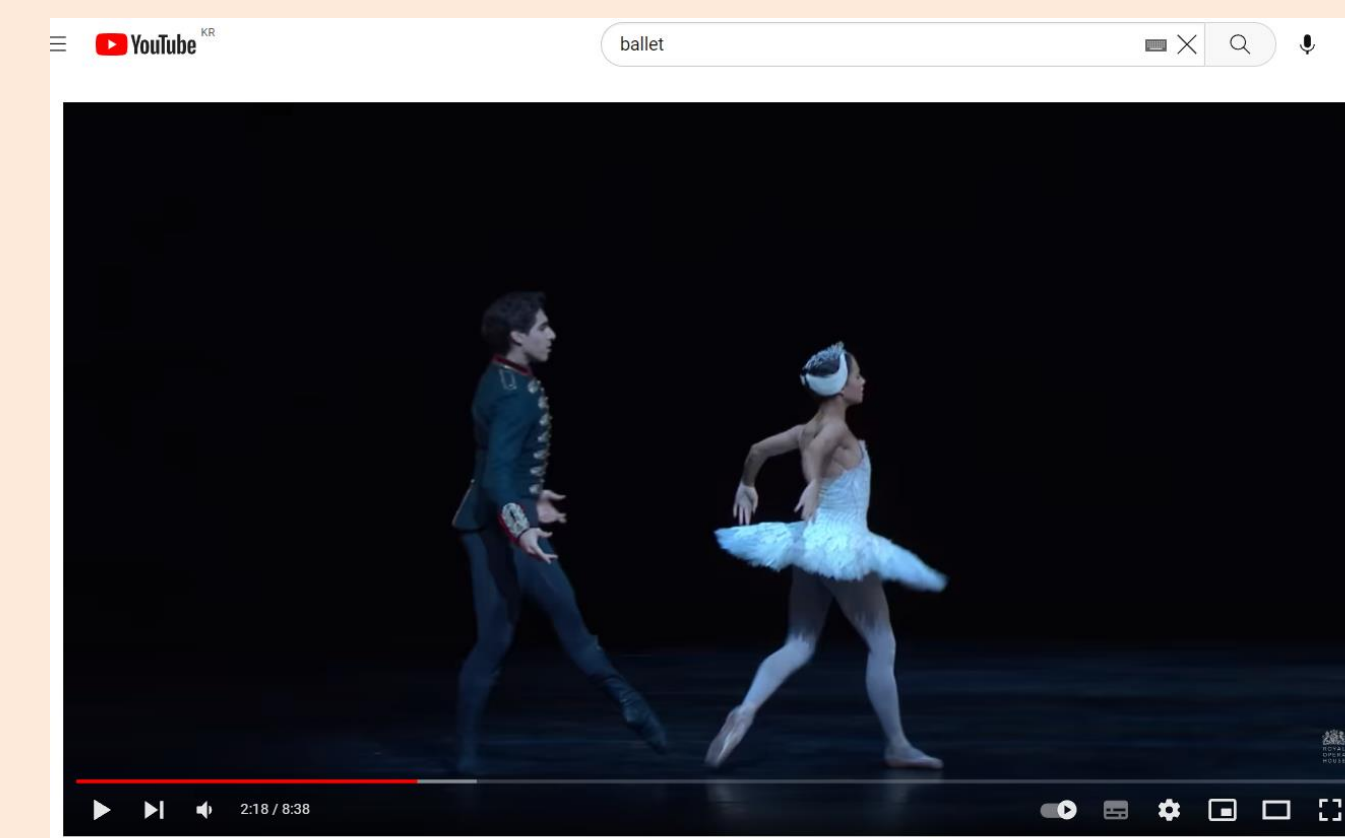


FIG. 5. performed choreography in YOUTUBE

## Considerations

Through mapping LRM to RDA 2020 and original RDA to RDA 2020, some considerations are suggested:

1. It is needed to link original RDA and RDA 2020 in terms of rules or provisions
2. When tracking provisions by linking, give the information about the history from start point to there
3. New method is needed to describe various resource types
4. Display of resource types is designed for users needs

## References

RDA Toolkit (2020). <https://access.rdatoolkit.org/>

Riva, Pat, Patrick Le Boeuf, & Maja Žumer (2017). IFLA Library Reference Model. From [https://repository.ifla.org/bitstream/123456789/40/1/ifla-lrm-august-2017\\_rev201712.pdf](https://repository.ifla.org/bitstream/123456789/40/1/ifla-lrm-august-2017_rev201712.pdf)